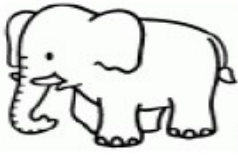


# ORDENA LAS SÍLABAS

le



e

fan

te

truz



ve

a

ro



pa

ja

sa



ri

po

ma

na



lle

ba

na



i

ca

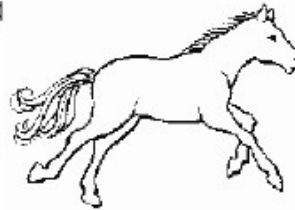
col



ra

ca

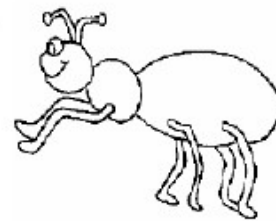
ba



llo

ca

mi



ga

hor

jo



gre

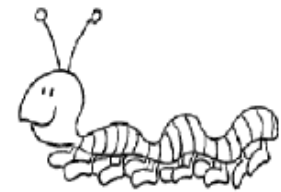
can

po



pul

sa



gu

no

tón



ra

me

ca



llo

lli



na

ga